

# SURDIAL<sup>TM</sup> 55<sup>PLUS</sup>

## HEMODIALYSIS MACHINE

The **SURDIAL<sup>TM</sup> 55plus** is an easy to use and cost-efficient dialysis machine that combines proven technology with new advanced features for improved treatment of patients all over the world.

### Touchscreen user interface

The responsive touchscreen enables easy operation of the menus

### Air bubble and blood detection

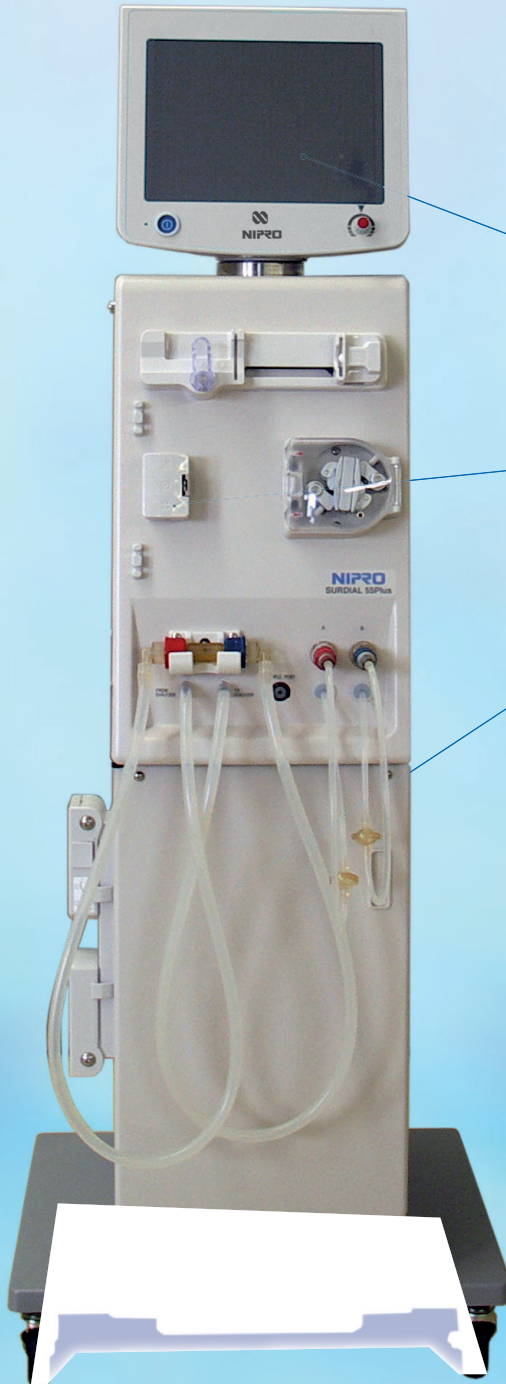
Detects air bubbles in the venous line and blood presence to secure patient infusion

### Pathway design

The hydraulic pathway is optimized with additional safety parts

**SURDIAL<sup>TM</sup> 55plus**, second generation features:

- Dose Finder (Kt/V)
- Endotoxin filter
- Acid concentrates central delivery
- Fast preparation (8 minutes)
- Fast bicarbonate cartridge drain (55 seconds)
- Reduced disinfection time (-40%)
- External network connector

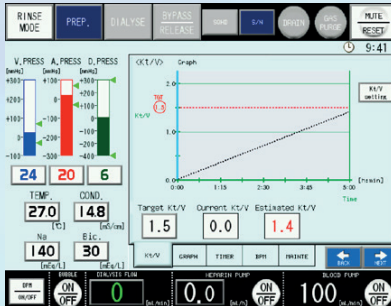
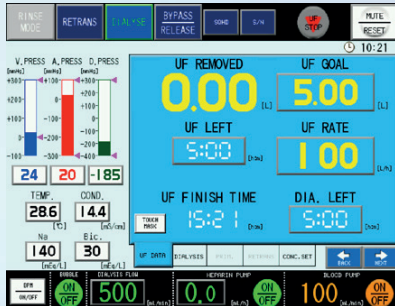


# NIPRO

Your Partner in Health Care



# Rotating touchscreen user interface

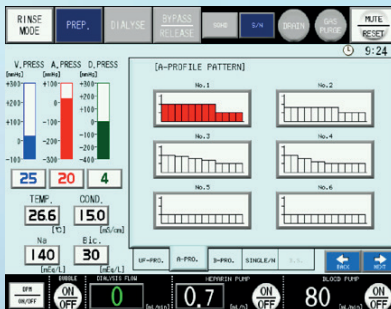
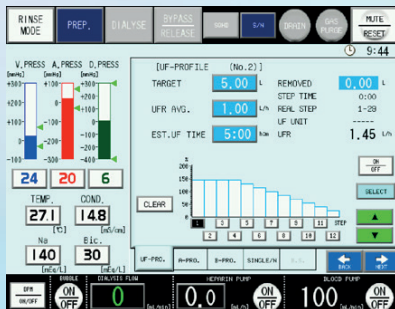


## Treatment

Treatment screens are designed to be easy to use and are integrated. Treatment parameters can be changed via the touch panel.

## Dose Finder

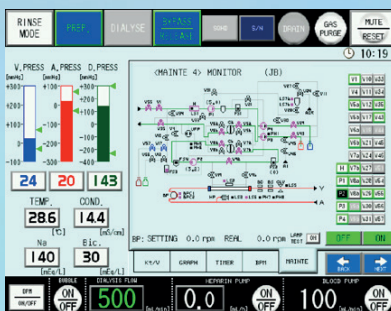
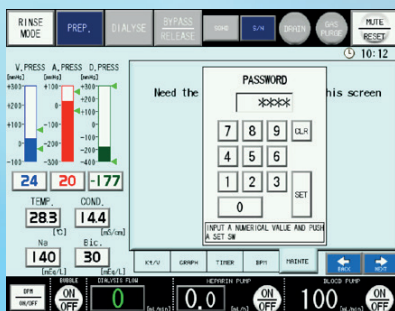
Kt/V prediction after 5 minutes of treatment to ensure patient target will be achieved. Parameters can be adjusted continuously to optimize the treatment.



## Profiling

Sodium, Bicarbonate and UF profiles are built in features.

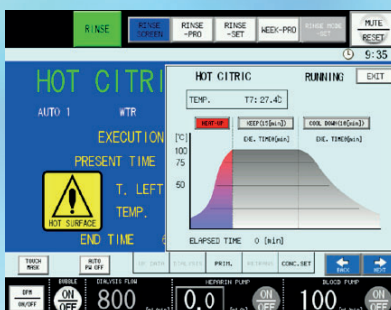
When using profiling for Sodium, Bicarbonate and UF, 6 options can be stored and selected respectively.



## Security

Maintenance and conductivity settings have been protected by password to prevent accidental misoperation.

Water and disinfectant inlets equipped with redundant valves as additional protection.



## Rinsing

Most common rinse and disinfection methods are available. Various rinse programs can be set daily or weekly and **SURDIAL™ 55plus** can automatically switch off.

# Technical Specifications

<b>Dimension (w x d x h)</b>	280 x 420 x 1365 mm	
<b>Weight</b>	± 72 kg	
<b>Power Supply</b>	AC 230 V/AC 110 V ±10% Max. Consumption 2000 VA Backup battery 30 minutes	
<b>Water Supply</b>	Temperature 17~30°C (4°C~30°C with Heat Exchanger) Pressure 0.05 MPa to 0.74 MPa Flow 900 ml/min Quality ISO 13959:2009	
<b>Function</b>	Acetate and Bicarbonate Dialysis Sequential UF Single Needle (Single Pump) UF & Conductivity Profile	Touch Screen Self-Check Dose Finder Blood detector
<b>UF Control</b>	Volumetric Control by Ceramic pump UF rate 0, 0.10 to 5.00 L/hr Accuracy ± 30 g/hr	
<b>Conductivity Range</b>	130 to 160 mEq/L (B: 5 to 65 mEq/L)	
<b>Dialysis Flow Range (Qd)</b>	300 to 800 ml/min (Max. 800 ml/min with factory option)	
<b>Dialysate Temperature</b>	32.0°C to 39.0°C	
<b>Blood Pump Rate (Qb)</b>	10 to 600 ml/min (8.00 x 12.00 mm tube) 10 to 300 ml/min (6.35 x 9.75 mm tube)	
<b>Syringe Pump</b>	Delivery Range 0 to 9.9 ml/hr Syringe Size 10, 20 and 30 ml Stop Program	
<b>Bubble Detector</b>	Ultrasonic Sensor Min. 0.3 µl (at Qb = 200 ml/min)	
<b>Venous Pressure Sensor</b>	-500 to 500 mmHg	
<b>Arterial Pressure Sensor</b>	-500 to 500 mmHg	
<b>Rinse Program</b>	Water Rinse Chemical Rinse (disinfection) Acid Rinse	Hot Citric disinfection Auto Rinse programs
<b>Blood Leak Detector</b>	Optical Sensor	

## OPTIONAL FEATURES

- Automatic blood pressure monitor
- Second disinfectant or acid connection
- Endotoxin dialysate filter
- Heat Exchanger unit
- Bicarbonate powder cartridge system
- Central concentrate delivery
- Pedestal for dialysate concentrate solution
- External Network
- Hook for dialysate bag



Through continuous research Nipro aims at offering patients around the world the best renal care. Nipro is one of the largest manufacturers of dialyzers in the world, but understands that the dialysis machine is the heart of the treatment.

Nipro has a proud history of both challenging the technological limits and creating innovative solutions that improve renal care every day.

This means being continuously aware of the many challenges that dialysis clinics face today and in the future.

Identifying these challenges and integrating them into our product design is part of our ongoing commitment to ensure we continue to answer all your clinical needs.

The Surdial™ 55plus is an easy to use dialysis machine offering patients the best renal replacement therapy to increase their well being and quality of life.

It is a cost-efficient machine that combines proven technology with new advanced features for improved treatment.

With its colour LCD touch screen, operating this machine is easy. The turnable and clear display gives you a good overview of your treatment data.



*Legal Manufacturer*

**NIPRO CORPORATION**

3-9-3, Honjo-Nishi, Kita-Ku, Osaka, Japan

☎ +81-6-6372-2331

🌐 [www.nipro.co.jp](http://www.nipro.co.jp)

*Authorized CE Representative*

**NIPRO EUROPE N.V.**

Weihhoek 3h, 1930 Zaventem, Belgium

☎ +32-2-725 55 33

🌐 [www.nipro-europe.com](http://www.nipro-europe.com)

*Overseas Subsidiaries*

**NIPRO MEDICAL CORPORATION (US)**

☎ +1-305-599-7124

**NIPRO ASIA PTE.LTD**

☎ +65-6334-1887

**NIPRO SALES (THAILAND) CO.,LTD**

☎ +66-2-551-2000

**NIPRO TRADING (SHANGHAI) CO.,LTD**

☎ +86-21-6237-0606