

Exclusive Distributor for West & South of India.



Aprameya MedTech Pvt Ltd. (A Subsidiary of Aprameya Engineering Limited)
712 7th Floor, Venus Atlantis Corporate Park, Nr Shell Petrol Pump,
Pralhad Nagar Road, Ahmedabad, Gujarat - 380015
Tel: +079-40068827 Mo - +91 93164 83923/ 96876 14031
Email: marketing.aprameya@gmail.com
<https://www.aelhealth.com/>



SonoScape Medical Corp.
2F,12th Building, Shenzhen Software Park Phase II, Keji Middle
2nd Road, Shenzhen, China
Tel: +86-755-26722890 Fax: +86-755-26722850
Email: market@sonoscape.net www.sonoscape.com

ISO 13485  0197

E-MIS0200918

SonoScape

MIS Solutions

Trailblazing innovation at the forefront of precision diagnostics and treatment





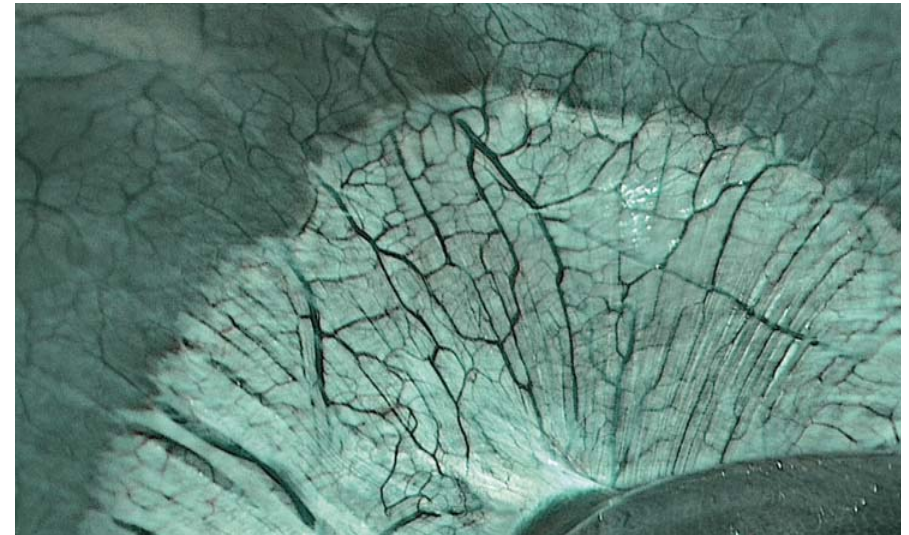
SV-M2K30

FHD Camera System



The imaging technology you can rely on

Every SonoScape's MIS system comes with VIST¹, a chromoendoscopy technology that combines optical and digital image processing. VIST enhances the details of the mucosa and the blood vessels. With this added information, VIST may help surgeons in lesion detection and in-vivo diagnosis.



¹Versatile Intelligent Staining Technology

The visual experience you can truly trust

Equipped with a 3-CMOS image sensor, the image colour, edge and structure are optimised, the noise minimised. It provides an outstanding and stable visual field down to details, creating an excellent visual experience for the surgeons with true-to-colour images, enabling easier and finer operations.

The optical excellence you called for

The paired light source employs a multi-LED light source with a life span of 10,000 hours. You will obtain a noticeable brighter, high-quality image with minimal light loss. With the durable and malleable illumination cable, it further improves the light transmittance efficiency.