

Exclusive Distributor for West & South of India.



Aprameya MedTech Pvt Ltd. (A Subsidiary of Aprameya Engineering Limited)  
712 7th Floor, Venus Atlantis Corporate Park, Nr Shell Petrol Pump,  
Pralhad Nagar Road, Ahmedabad, Gujarat - 380015  
Tel: +079-40068827 Mo - +91 93164 83923/ 96876 14031  
Email: marketing.aprameya@gmail.com  
<https://www.aelhealth.com/>



SonoScape Medical Corp.  
2F,12<sup>th</sup> Building, Shenzhen Software Park Phase II, Keji Middle  
2<sup>nd</sup> Road, Shenzhen, China  
Tel: +86-755-26722890 Fax: +86-755-26722850  
Email: market@sonoscape.net www.sonoscape.com

ISO 13485  0197

E-MIS020918

**SonoScape**

## MIS Solutions

Trailblazing innovation at the forefront of precision diagnostics and treatment



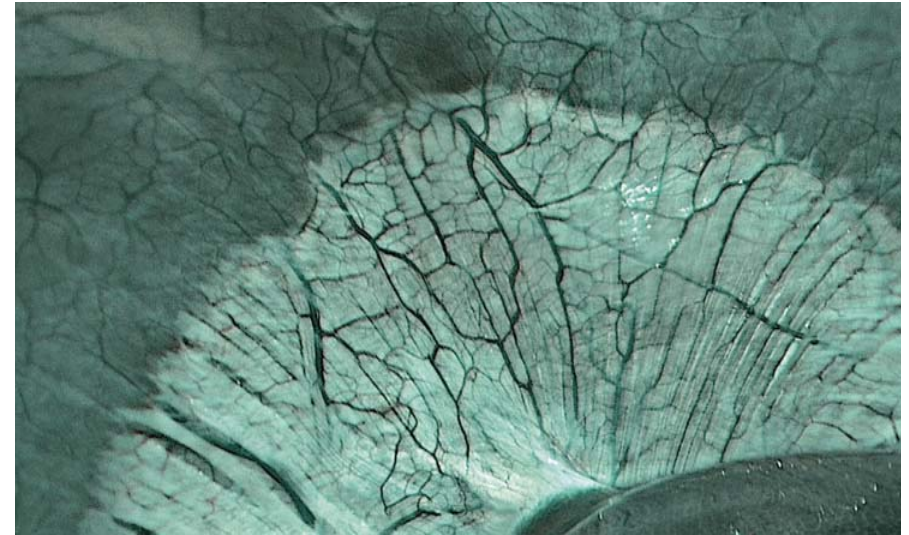


## SV-M4K30

4K Camera System

## The imaging technology you can rely on

Every SonoScape's MIS system comes with VIST<sup>1</sup>, a chromoendoscopy technology that combines optical and digital image processing. VIST enhances the details of the mucosa and the blood vessels. With this added information, VIST may help surgeons in lesion detection and in-vivo diagnosis.



<sup>1</sup>Versatile Intelligent Staining Technology

## The visual experience you can truly trust

Equipped with a 3-CMOS image sensor, the image colour, edge and structure are optimised, the noise minimised. It provides an outstanding and stable visual field down to details, creating an excellent visual experience for the surgeons with true-to-colour images, enabling easier and finer operations.

Say farewell to visible pixels: SonoScape's 4K system supports 3840×2160 resolution, provides much more information than in the conventional HD. No details are lost even if it is zoomed at 2.0X.

## The optical excellence you called for

The paired light source employs multi-LED lights. You will obtain a noticeable brighter, high-quality image with minimal light loss. With the durable and malleable illumination cable, it further improves the light transmittance efficiency.