

InsightHD 1

Full HD Surgical Camera



Experience Precision Imaging!

KEY FEATURES & BENEFITS

FULL HD (1920X1080) RESOLUTION

Clear imaging with Full HD resolution, ensuring detailed visualization of anatomical structures with natural color rendering

BSI-CMOS SENSOR

Equipped with a state-of-the-art 1/2.8" BSI-CMOS sensor, the **InsightHD 1** delivers superior image resolution and color accuracy, even in challenging lighting conditions

CUSTOMIZABLE FUNCTION BUTTONS

The camera head comes with 4 customizable buttons, thus allowing surgeons to tailor the camera's functions to their specific preferences and surgical requirements

IN-BUILT FULL HD VIDEO RECORDING

Capture high-definition videos and images directly with the **InsightHD 1**, eliminating the need for external recording devices. This feature is the first in its segment, providing added convenience

COMPACT & LIGHTWEIGHT DESIGN

Designed for ease of use, the compact & lightweight design of the camera weighing only 150 grams, minimizes fatigue during prolonged surgical procedures

RELIABILITY

Built with quality craftsmanship and backed by ALAN's reputation for outstanding reliability, the **InsightHD 1** ensures consistent performance in demanding surgical environments

EXCEPTIONAL CUSTOMER SERVICE

Benefit from ALAN's commitment to excellent customer service, providing support and assistance to healthcare professionals throughout the camera's lifecycle

ECONOMICAL ADVANTAGE

InsightHD 1 is an ideal choice for laparoscopy surgeons, gynaecological surgeons, urological surgeons, general surgeons, hospitals, and nursing homes with operation theatres seeking effective imaging solutions



STANDARD ACCESSORIES SET

CAMERA HEAD

The camera comes with a lightweight camera head equipped with 4 customizable buttons, designed to minimize fatigue during prolonged surgical procedures.



InsightHD Camera Head

CABLE AND CONNECTORS

Included cables and connectors ensure seamless connectivity.

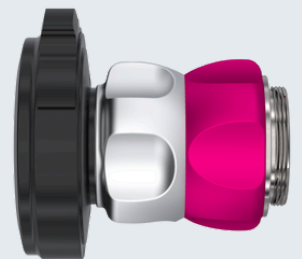
- HDMI Cable
- DVI Cable
- Power Cord



f=25mm

OPTICAL COUPLER

- Fixed Focal Length
 - 18mm / 22mm / 25mm / 28mm
- Parfocal Variable Focal Length
 - 16mm - 31mm



f=16-31mm

INSIGHTHD TELESCOPES

Top quality optics in InsightHD telescopes offer high image quality, contrast and light transfer ensuring unparalleled vision and clarity for optimal surgical outcomes



ALAN

ALAN ELECTRONIC SYSTEMS PVT. LTD.

Factory & Head Office:

Plot No. F-75, MIDC, Additional Ambarnath Industrial Area, Anand Nagar, Jambivali, Ambarnath (East) - 421506, Dist: Thane, Maharashtra, INDIA.

Contact : +91 93205 53969 / +91 93205 53973

Email ID : sales.medical@alanindia.net

Website : www.alanindia.net